

Cold water high pressure washers

PW-C70



HANDLE
Sturdy ergonomic handle for convenient easy manoeuvring.



HOSE REEL
Manual hose reel, enabling the hose to be stored simply, protecting it from all damage (Standard in PLUS Models).



H.P. flexible hose 10 m
Code TBAP 25324



Handgrip G5000
Code IPPR 40002



Double lance Inox PD 70
Code LCPR 12983



Nozzle for lance H.P.
Code UGLN 49991 (IDAF 40321)
Code UGLN 49996 (IDAF 40319)
Nozzle for lance L.P.
Code UGLN 89941



Pressure can be adjusted from the machine. Pressure adjustment knob enables pressure to be adapted to the various cleaning needs.



Detergent tank holding 25 litres.



Single knob for switching the machine ON and OFF and adjusting the amount of detergent.



The large diameter wheels, wide tread and swivelling wheel with brake give the machine great stability while at the same time making it easy to move.

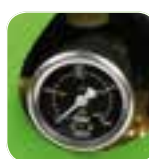


The cable reel enables the power cable to be stored tidily at the end of work.

Technical characteristics

MOTOR

- Electric motor, 4-pole, 1400 rpm, continuous duty with double bearing and thermal cutout. Extends the working life of mechanical components.
- Pump-motor connection with anti-vibration coupling for low vibrations, improves the reliability and working life of all mechanical components.



PRESSURE GAUGE

- Professional pressure gauge to monitor work pressure at all times.

ACCESSORIES COMPARTMENTS

- Useful convenient accessories compartments for trigger gun, lance and lance with rotating nozzle to keep them tidy and ready for use.

Code	Model	Remote control	Pressure Max (bar/MPa)	Flow Rate Max (l/h)	Main Supply (Ph-V-Hz-A)	Absorbed Power Max (kW)	Motor Speed (rpm)	Detergent tank (l)	Weight (Kg)	Dimensions (cm)
IDAF 40319	PW-C70 D2021P T	Total Stop D	30÷200/3÷20	1260	3-400-50-15,6	8,4	1400	25	81,2	82x48x87
IDAF 40321	PW-C70 D2517P T	Total Stop D	30÷250/3÷25	1000	3-400-50-17,0	9,5	1400	25	89,8	82x48x87

All version are available in the Plus version which, as well as the standard accessories, also includes hose reel and 15 m H.P. hose.

Recommended optional accessories



Lance with double nozzle holder
Code LCPR 24906



Flexible hose
15 m Code TBAP 40062
20 m Code TBAP 44379



Drain kit
10 m Code TBAP 23853
20 m Code TBAP 24406



Mudguard lance
Code LCPR 29360



Rotating hydro-brush lance
Code SPID 24911



Foam head
Code LCPR 24937



Extension P70 Sandblaster



Hose couplings
Code RCIN 10810

